



TOOWOOMBA
GRAMMAR SCHOOL

Firewall & Network Monitoring Upgrade

Firewall Upgrade Provides Increased Protection & Visibility Through Greater Monitoring & Reporting.

CLIENT PROFILE

Toowoomba Grammar School was established under the Grammar Schools Act of 1860 to provide a quality education designed for boys. TGS is a non-denominational, independent day and boarding school for boys from Prep to Year 12.

TGS has built its reputation upon high quality teaching, excellent academic results, outstanding pastoral care and a holistic approach to the education and formation of young men.

REQUIREMENTS

- To provide a solution for Internet safe use with Identity Based Visibility
- To provide a solution with access and user controls on a highly available Tier1 Firewall
- To enable more comprehensive and measurable network data

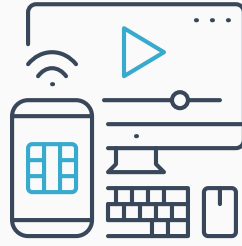
THE CHALLENGE

There was no visibility into threat and response data, and limited user-based reporting. As a result, it was unknown if the security devices were effective, and to what extent, or the extent to which it protected the variety of TGS network users - staff, students, and guests.

OUTCOMES



Highly visible, reportable network monitoring.



Automated, right time access based on roles.



Active control via content filtering.

SOLUTION

Aryon presented a turn key migration that integrated multi layered systems to provide Identity Based Controls, *Just-in-Time* access, and Extended Reporting based on the Palo Alto firewall platform.

The solution considered the varying user types (students, educators, guests etc.) to ensure that access, monitoring and reporting were all optimised.

Aryon has enabled TGS to tighten the network suitability for its borders. As the school provides Internet to boarding students, previously, the school had “unrestricted Internet access” with limited visibility.

Since the new system went live, we have gone from only seeing 100,000 unqualified events to 700,000 events every 30 days with full visibility.

- Ron Robinson, Director of ICT

